



PROTECTA
AWNING SYSTEMS - BY UNILINE

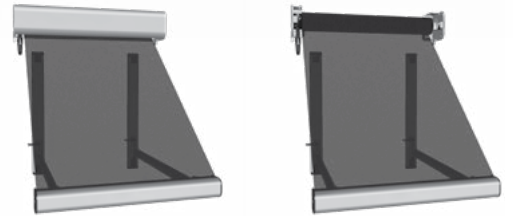


PIVOT P



Designed to deflect heat and glare while maximising light, ventilation and privacy.

Uniline have taken the Archline system and Protéger Pivot and combined them into one sleek and stylish system while adding significant new functionality and hardware, bringing it to a new level and into our premium PROTECTA range. The most obvious change is the new front rail, designed to perform both horizontally and vertically. Add to that heavy-duty flexible joints, which perfectly compliment the front rail, and it becomes even easier to operate. All of this is then matched perfectly with the stylish PROTECTA headbox using the half hooding option.



FEATURES & BENEFITS

- Caters for widths up to 5m (without hooding), and can project out to 1.5m
- Tough enough to withstand the elements thanks to its powder-coated aluminium body and 3.2mm diameter spring with a stainless steel cable
- Slide rails available to cater for longer drops and reducing obstruction

PROTECTS FROM



SUN



RAIN

STANDARD COLOUR RANGE



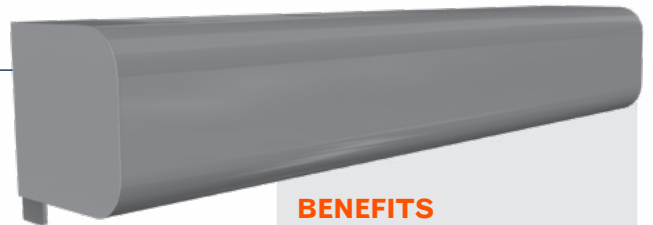
*Available in 40 custom colours on request.

SEAMLESS

HOOD CLEAN LOOKING CURVES WITH NO VISIBLE JOINING LINES

DURABLE CAST ALUMINIUM

Can be face fit or reveal fit and allow for the removal of the roller tube without removing the system from the wall. The simplicity of the headbox and hooding allows easy access to operational spring system.



BENEFITS

- Modern Design
- Easy Clip-In Installation
- Lightweight
- Cast Aluminium

New

ONE COMPONENT

BRACKET WITH COVER BEST OF BOTH WORLDS LESS COST AND LESS STORAGE

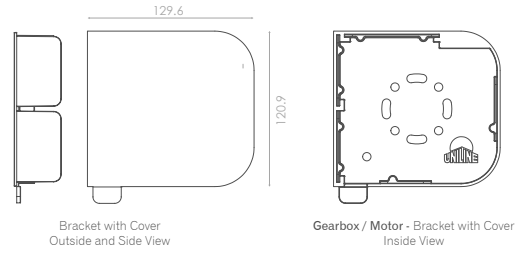


SPECIFICATIONS

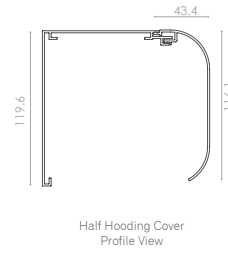
	STANDARD	
Maximum Width	2 x Projection Arms = 3,500mm 3 x Projection Arms = 4,000mm	
Maximum Drop	3,000mm	
Maximum Area	12m ²	
Hoarding Size	Height – 120.9mm Projection – 129.6mm Material – Aluminium Finish – Powder Coat	
Front Rail	Aluminium 6063 T5	
Tube	63mm Roll Formed Zincalume® .75mm AZ150 (5600mm/6500mm) 63mm Aluminium 6106 - T6	
Drives	Gearbox Geiger 2.7:1 Gearbox Geiger 9:1 UniGlide Motors	
Drive End	Nylon 66 (5% Glass Filled)	
Idler with Hole	Nylon 66 (5% Glass Filled)	
Brackets	Zinc Plated Mild Steel Powder Coated	<div style="background-color: #ff9900; color: white; padding: 2px; display: inline-block;">New</div> Cast Aluminium
Bracket Covers	Cast Aluminium	
Front Rail End Caps	Nylon 66 (5% Glass Filled)	
Hood Ends	Aluminium Grade 6063 T5	
Pivot Pin and Plate	T304 Stainless Steel Mild Steel (Zinc Plated Service Condition 4)	
Front Rail Support	Cast Zinc	
Heavy Duty Spring	Steel Spring Cast Aluminium Body	
Arm Extrusion	Aluminium Grade 6063 T5	
Slide Rail Extrusion	Aluminium Grade 6063 T5	

New

STANDARD BRACKET WITH COVER



STANDARD HOODS



A New Era in External Awnings... Amazing Shade

Call: 02 6041 2822 // info@sunjan.com.au // sunjan.com.au
256 TOWNSEND ST, ALBURY SOUTH, NSW 2640

